



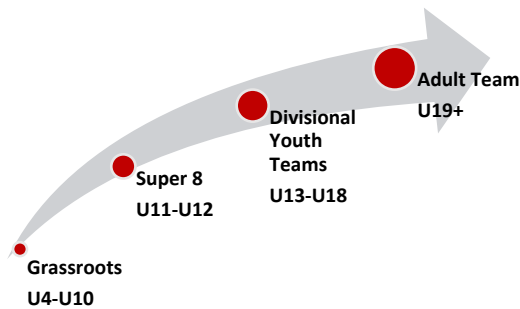
## PLAYER MANAGEMENT PATHWAY

Abbotsford Soccer Association is making great strides in creating a club where all players can be lifetime members in various ages, levels, and capacities. All players can find an appropriate level of play and programming that meets their desired levels of ambition and commitment.

ASA fully supports and endorses a “Player First” approach, where we make decisions based on the needs of the player. This primary concern and consideration is taken over the desires of a coach or team, who may be motivated to just win games.

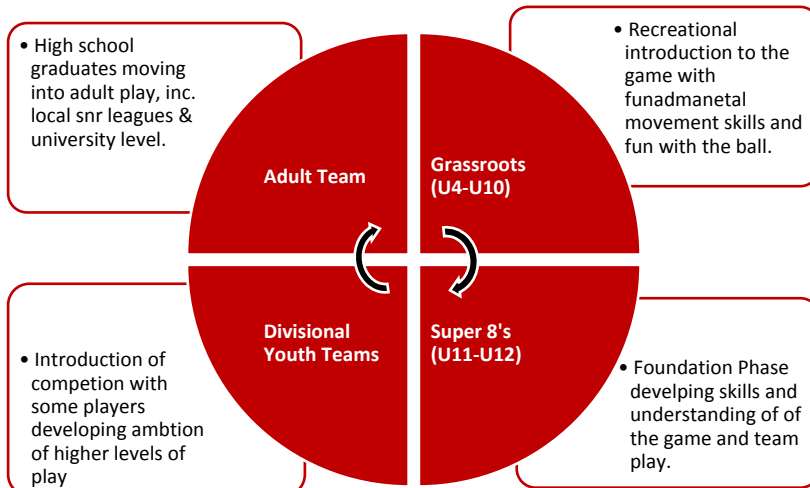
### Internal Pathway

ASA has a proud history of being a club with many lifetime members, who have played in many programs across various levels of play from their childhood introduction to the sport, through youth play at recreational and competitive levels before moving into the adult game.



*Once players leave the in-house Grassroots programming, players can be placed within varying levels of competition through all team programming from Super 8's through Divisional Youth teams and on into Adult programming following high school graduation*

As a priority, ASA coaches consistently ensure (via ongoing evaluation/assessment) that players are playing in an environment that will best help their personal development.



## **Registration Process**

Our registration system is [Power Up](#)

When registering it is IMPORTANT that parents create and remember their login details.

The details of the first person you enter MUST be that of the Parent/Guardian. Once this is complete, you will be able to add the details of your child(ren).

All programming that is available to your child(ren) will be displayed under their respective profiles.

Should you have any problems or questions regarding the registration process, please do not hesitate to reach out to our admin staff at [info@abbotsfordsoccer.com](mailto:info@abbotsfordsoccer.com) or by calling the office 604-859-3033.

## **Player Evaluation & Assessment**

Once in the team program (Super 8's or Divisional), your team coach, with the support of the club technical director, will carefully monitor the ongoing progression/development of all players, to ensure the safety and successful participation at the respective level of competition to which they are placed. Team coaches are encouraged to provide ongoing feedback to parents and players and to provide a formal end of season assessment to you and the club technical director.

All grassroots programming (U4-U10) is offered as open registration, and as such no evaluation or player assessments are conducted prior to enrollment.

Technical leads will track player progressions and development through these early programs and offer feedback and guidance, as players enter the team programming at U11.

## **Travel opportunities**

From the U11 age groups players will have the opportunity to be part of 'regular team' program, which means that weekend game schedules are arranged by various organizations (Leagues) outside of ASA, and that a commitment to travel to various communities around the lower mainland is required at weekends.

## **New Player Application**

If you are a player aged between 10-17yrs old, it will be beneficial for us to gain a little background and understanding of your soccer experience so that we may best guide you to the appropriate program/team. We would therefore ask that you first complete the following form – [New Player Application Form](#)  
Upon receipt of this completed form, our technical team will be in touch to provide specific guidance, and to connect you with the appropriate coaching staff.

If you are a player aged between 3-9yrs old, you can immediately register with the club and select one of our appropriate, age-related Grassroots programs - No evaluation is required for the younger age groups.

## **Internal Player Transfer Application Form**

For current ASA players who may wish to receive an evaluation, for a potential transfer to another team.

It is important that your current team coach is aware of your ambition and the following information will be shared with both your existing team coach and the coach of the team you are asking to receive an evaluation from.

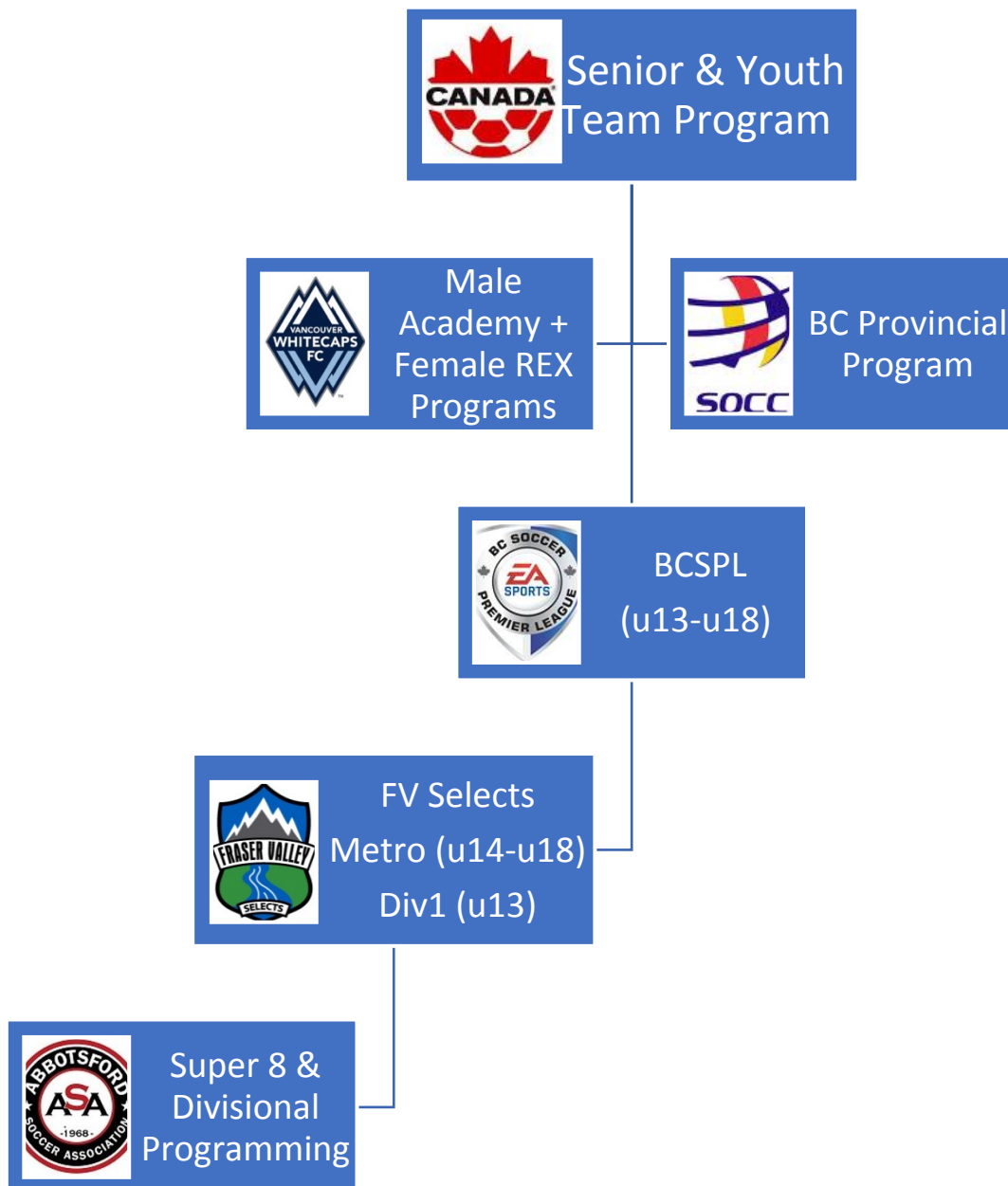
You must also understand that while player ambition to move to higher levels of play is fully supported, it may not always be possible to grant an evaluation based on the current status of your existing team and that the coach who you are requesting an evaluation from, is under no obligation to offer you a spot on his/her roster.

Please complete the following [Internal Player Transfer Form](#)

### **External Pathway**

Where members have ambition and appropriate abilities, to play at a level that is not currently offered at ASA, we are delighted to provide the necessary guidance and information available to members.

Such programming may be the Fraser Valley Selects (Metro and/or Div1 levels) or the BC Soccer Premier League (BCSPL) competition, which in turn may lead onto representative opportunities with Provincial, Professional and National team programming.



ASA does have the desire to host the BCSPL level of play in the future and is working hard to attain the necessary accreditation through Canada Soccer and BC Soccer.